



Digestion

Science – Junior Cert

Quick Notes

Digestion

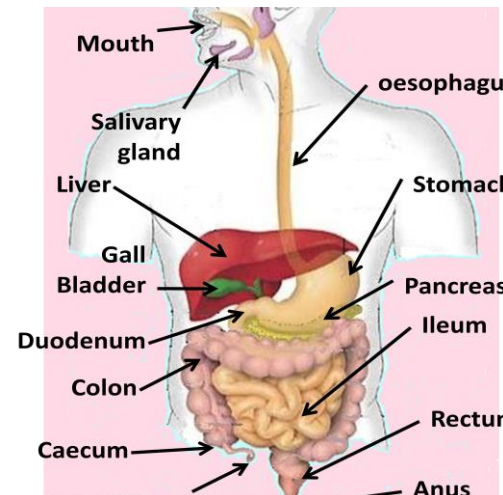
Digestion

Digestion: *The breakdown of food to make it suitable to be absorbed into the body*

- Physical – teeth and churning in the stomach
- Chemical – by enzymes in the mouth, stomach and small intestine

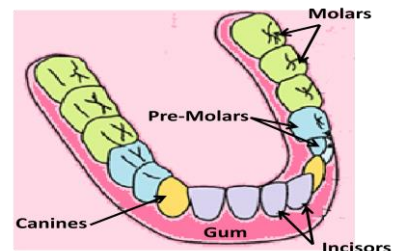
Structure and Function of Digestive System

Part	Functions
Mouth	<ul style="list-style-type: none"> • Teeth chop food • Saliva lubricates • Amylase starts digestion of carbohydrates
Oesophagus	<ul style="list-style-type: none"> • Pushes food to stomach by peristalsis
Stomach	Mixes food with <ul style="list-style-type: none"> • HCl to kill bacteria • Pepsin to break down protein
Liver	<ul style="list-style-type: none"> • Produces bile to neutralise acid from stomach
Pancreas	Produces <ul style="list-style-type: none"> • Amylase to digest carbohydrates • Lipase to digest fats • Protease to digest proteins • Insulin to control blood sugar levels
Small Intestine	<ul style="list-style-type: none"> • Absorbs digested food
Large Intestine	<ul style="list-style-type: none"> • Water balance • Vitamins B and K produced by symbiotic bacteria



Teeth

Type	Function
Incisors	Flat and sharp for cutting food
Canines	Pointed for tearing food
Pre-Molars	Flat and ridged for crushing and grinding food
Molars	Flat and ridged for crushing and grinding food



For more comprehensive Revision Notes Visit.... mocks.ie Junior Cert

[Science Notes](#)