



Rivers

Geography past Exam Questions

Higher Level

2013

Section 1 – Q1 C

C. Fluvial Adjustment

Explain how rivers adjust to a change in base level, with reference to example(s) that you have studied.

[30m]

Q2 C

B. Landform Development

Answer (i) or (ii).

- (i) Explain with the aid of a labelled diagram(s) the formation of **one** landform of erosion that you have studied.

Or

- (ii) Describe and explain **one** process of mass movement that you have studied.

[30m]

2012

Section 1 – Q2 B

B. Landform Development

Answer (i) or (ii).

- (i) Explain with the aid of a labelled diagram(s) the formation of **one** landform of deposition that you have studied.

Or

- (ii) Describe and explain **one** process of mass movement that you have studied.

[30m]

Q2 C

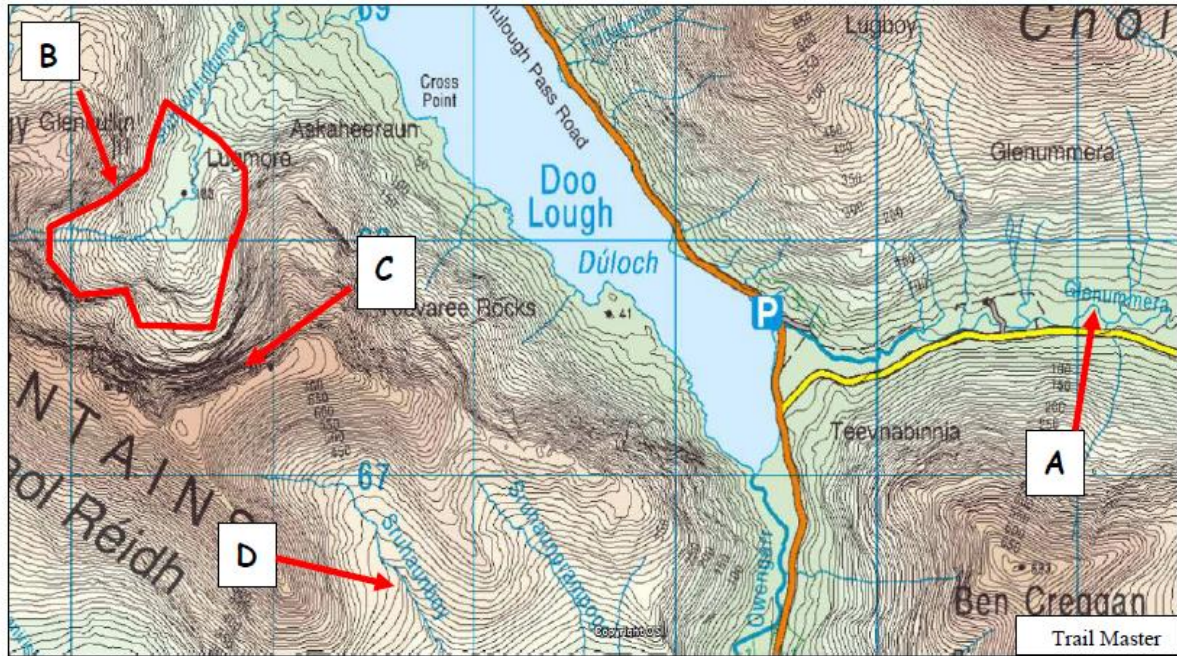
C. Surface Processes

Examine, with reference to example(s) that you have studied, how human activities have impacted on **either** river, coastal **or** mass movement processes.

[30m]

Part A – Q7

7. Landforms



Examine the Ordnance Survey map extract above.

- (i) Match **each** of the letters **A** to **D** with the correct landform in the table below.
- (ii) State whether fluvial processes or glacial processes were responsible for the formation of **each** landform by ticking the correct box.

Landform	Letter	Fluvial Processes	Glacial Processes
V-shaped valley			
Corrie/Cirque			
Arête			
Meander			

[8m]

Section 1 – Q1 C

C. Human Interaction

Explain, with reference to example(s) that you have studied, how human activities have impacted on the operation of any **one** of the following surface processes:

- Mass movement processes
- River processes
- Coastal processes.

[30m]

Q2 B

B. Landform Development

The area shown on the 1:50000 Ordnance Survey map which accompanies this paper has been shaped by fluvial, glacial, coastal and mass movement processes.

Answer (i) or (ii).

- (i) Name **one** landform on the Ordnance Survey map that was formed by fluvial **or** glacial **or** coastal processes **and** give a six figure grid reference for its location. Describe and explain with the aid of diagram(s) the processes involved in the formation of this landform.

OR

- (ii) Identify an area on the Ordnance Survey map which has very steep slopes **and** give a six figure grid reference for its location. Describe and explain **one** mass movement process which might operate in an area such as this.

[30m]

2010

Section 1 – Q1 B

B. Landform Development

Answer (i) or (ii)

- (i) Examine, with the aid of a labelled diagram or diagrams, the processes that have led to the formation of any **one** Irish landform of erosion **or** deposition of your choice.

OR

- (ii) Describe and explain **one** mass movement process that you have studied.

[30m]

Q3 B

B. Human Interaction

With reference to an example you have studied, describe and account for **one** way in which humans attempt to influence or control natural processes. In your answer, refer to **one** of the following:

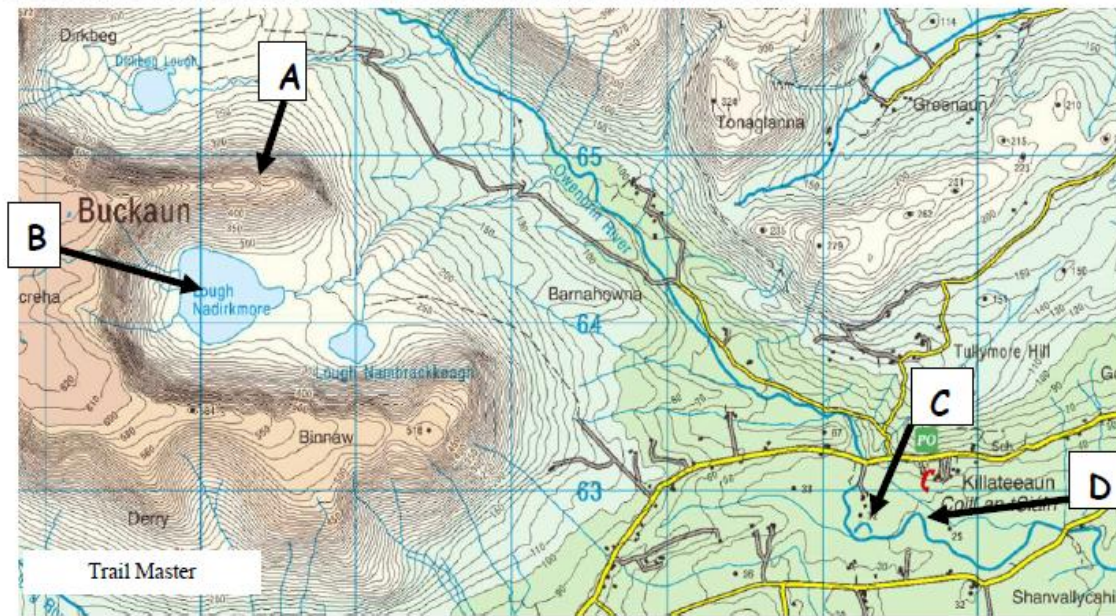
- Fluvial processes
- Marine processes
- Mass movement.

[30m]

Part A – Q10

10. Landforms

Look at the Ordnance Survey map below and answer the questions:



Question	Answer
Identify the glacial ridge at A.	
Identify the glacial landform at B.	
Identify the river landform at C.	
Identify the river landform at D.	

[8m]

Section 1 – Q1 C

C. LANDFORM DEVELOPMENT

Examine, with the aid of labelled diagram/diagrams, the processes which have shaped **one** Irish landform of your choice.

[30m]

Q3 C

C. HUMAN INTERACTION

Examine, with reference to **one** of the following, how human activities can impact on surface processes:

- Mass movement processes
- River processes
- Coastal processes.

[30m]

Part A – Q12

12. Landforms

In the space provided, match **each** of the named landforms in Column X with the description in Column Y:

Column X		Column Y			
Meander	A	Marine Action	1	A	
Moraine	B	Weathering	2	B	
Sandspit	C	Fluvial Action	3	C	
Scree	D	Glacial Action	4	D	

[8]

Section 1 – Q1 B

B. LANDFORM DEVELOPMENT

Examine, with the aid of a labelled diagram or diagrams, the processes that have led to the formation of any **one** Irish landform of your choice.

[30m]

Q1 C

C. HUMAN INTERACTION

With reference to an example you have studied, describe and account for **one** way in which humans attempt to influence or control natural processes. In your answer, refer to **one** of the following:

- Fluvial processes
- Marine processes
- Mass movement

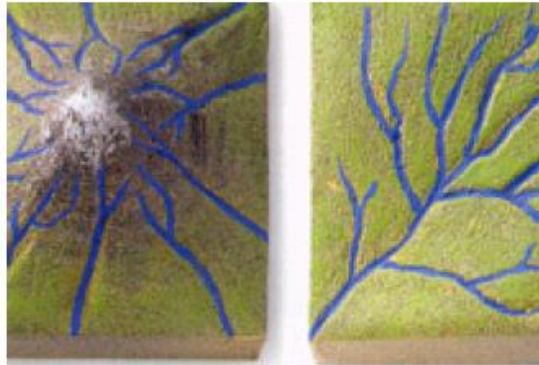
[30m]

Part A – Q11

11 Drainage Systems

A

B



Name the drainage pattern shown in Diagram A	
Name the drainage pattern shown in Diagram B	
What is the name given to an area of high ground which separates two river basins?	
What is the name given to the point where a tributary joins a larger river?	

[8]

Section 1 - Q2 B

B LANDFORM DEVELOPMENT

With the aid of a labelled diagram, examine the processes that have led to the formation of any **one** Irish landform of your choice.

[30m]

Q3 C

C HUMAN INTERACTION

Discuss how **one** of the following could impact on the landscape:

- Deforestation
- Coastal management
- Flood control

[30m]

Part A – Q5

5 Landforms

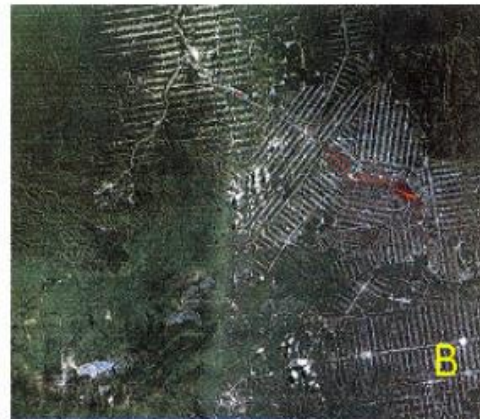
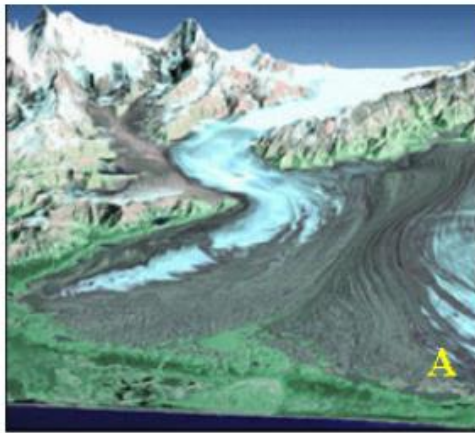
Match each of the named landform groups in Column A with the description in Column B.

Column A		Column B			
Delta, Moraine	A	Structural Landforms	1	A	
Corrie, Gorge	B	Weathering Landforms	2	B	
Rift Valley, Fold mountains	C	Erosional Landforms	3	C	
Scree, Clint	D	Depositional Landforms	4	D	

[8]

Q10

10 Photograph Interpretation



Source: USGS

Insert the correct letter A to D in the boxes below, to identify the various images.

Volcano (Mt. Etna)	
Delta (Mississippi)	

Deforestation (Brazil)	
Glacier (Alaska)	

[8]

Section 1 - Q2 B

B LANDFORM DEVELOPMENT

With the aid of a labelled diagram, examine the processes that have led to the formation of any one Irish landform of your choice – excluding those shown in the above photograph.

[30m]

Q2 C

C HUMAN INTERACTION

Examine how human processes can have an impact on the operation of **one** of the following natural processes:

- Mass movement processes
- River processes
- Coastal processes.

[30m]