



**Maths
Junior Certificate
Higher Level**

**Past Exam Questions on
PM Applied Measure (Measure & Time)**

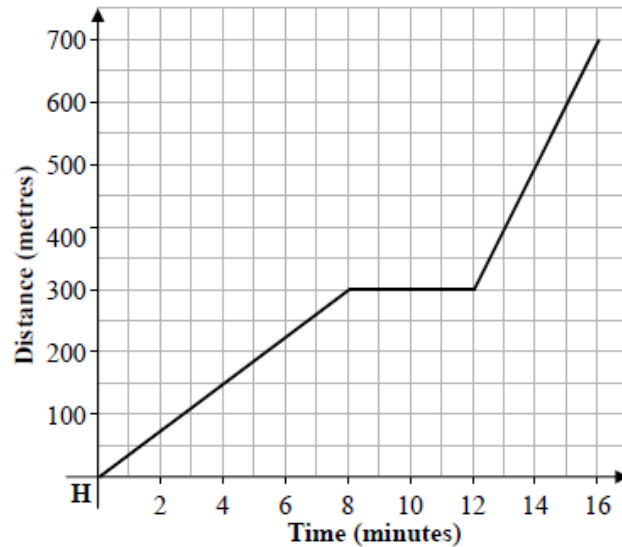
Q7 2013 Paper 1

Question 7

(Suggested maximum time: 10 minutes)

Angela leaves home (H) at 5 pm to go to football practice, which is 700 m away. The graph shows her journey, on foot, to football practice.

- (a) One of the stories below matches Angela's journey. Place a tick in the box beside the correct matching story. (Note: Only one story matches Angela's journey).



Story	Tick one story (✓)
Angela walks at a constant pace and stops at 5.08 for four minutes. She then walks at a slower pace and arrives at practice at 5.16.	
Angela walks at a constant pace and stops at 5.12 for four minutes. She then walks at a faster pace and arrives at practice at 5.16.	
Angela walks at a constant pace and stops at 5.08 for five minutes. She then walks at a faster pace and arrives at practice at 5.16.	
Angela walks at a constant pace and stops at 5.08 for four minutes. She then walks at a faster pace and arrives at practice at 5.16.	
Angela walks at a constant pace and stops at 5.08 for four minutes. She then walks at the same pace and arrives at practice at 5.16.	

- (b) Mary also lives 700 m from football practice, but cycles to practice. She leaves home five minutes after Angela. She cycles at a constant pace and arrives at practice two minutes before Angela. Represent Mary's journey on the graph above.

