



Agricultural Science Past Exam Questions

Classification of Organisms

Higher Level

2012 – Question 1 – Part (a)

- (a) (i) Name one monocot plant and one dicot plant.
- (ii) List two differences between monocot plants and dicot plants.

2012 – Question 1 – Part (b)

- (b) Give three characteristics of members of the class Mammalia.

2011 – Question 1 – Part (g)

- (g) (i) Name one member of each of the phyla Platyhelminthes and Arthropoda.
- (ii) Identify one disease of cattle caused by each member of the phyla you have named.

2010 – Question 1 – Part (f)

- (f) Name the family to which each of the following plants belongs:
 - (i) clover
 - (ii) ragwort
 - (iii) kale.

2009 – Question 1 – Part (a)

- (a) (i) To which plant family does clover belong?
- (ii) Give two agriculturally important characteristics of clover.

2009 – Question 6 – Part (a)

- (a) (i) To what phylum do insects belong?
- (ii) Describe a role insects can play in crop production.
- (iii) Suggest two reasons why the number of some insect species is declining in farm land.
- (iv) Name the stages in the life-cycle of an insect that undergoes complete metamorphosis.
- (v) Explain what is meant by incomplete metamorphosis of insects.

2008 – Question 1 – Part (d)

(d) State one characteristic which would distinguish members of the family Compositae from members of the family Cruciferae and name a plant from each family.

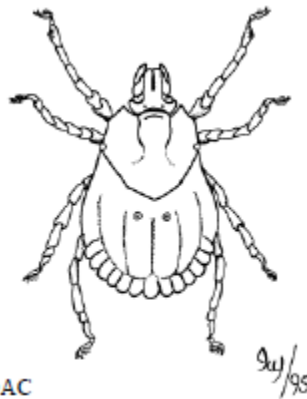
2008 – Question 1 – Part (g)

- (g) (i) Name the larval stage of each of the following; click beetle, crane fly.
(ii) Describe the damage done by each of these larvae.

2007 – Question 1 – Part (d)

(d) The diagram shows an ectoparasite of farm animals.

- (i) Explain the underlined term.
(ii) Identify the ectoparasite shown.
(iii) To which phylum does this parasite belong?



2006 – Question 1 – Part (e)

(e) Name a plant or animal parasite, belonging to the Phylum Nematoda, and describe its lifecycle.

2006 – Question 3 – Part (a) – Option 1

3. (a) The photograph below shows a dung beetle.

- (i) Name the phylum to which dung beetles belong.
(ii) Describe two benefits from the activities of dung beetles.

(iii) State two advantages of adding farmyard manure to a soil.

