



**Science Revised Syllabus
Junior Certificate
Higher Level**

**Past Exam Questions on
B Sensory System**

Q1 Part (d) 2013

(d) Nerves can carry messages in one direction only.

Clearly distinguish between sensory and motor nerves.

Distinction _____

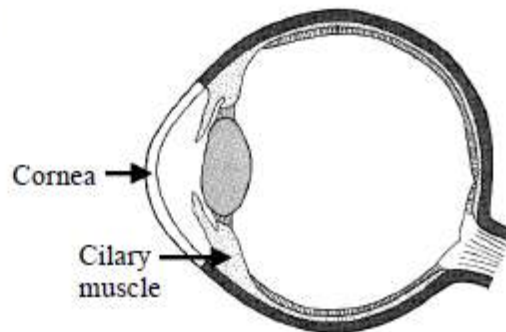
Q1 Part (d) 2011

(d) The diagram shows the human eye.

Give the functions of the cornea and of the ciliary muscle.

Function of cornea _____

Function of ciliary muscle _____



Q1 Part (h) 2008

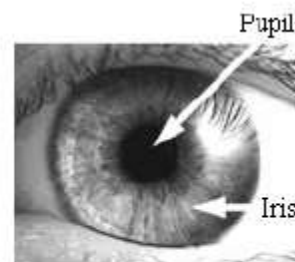
(h) Give the *function* of (i) the iris (ii) the pupil.

(i) _____

(ii) _____

The pupil is transparent. Why does the *pupil appear to be black* in most situations? (Note: the pupil may appear red in photographs taken in the dark using a flash).

Why...black? _____



Q1 Part (b) 2007

- (b) Nerves carry electrical messages around our bodies. Nerves have motor functions and sensory functions. Explain the *underlined terms*.

Motor function _____

Sensory function _____

Q1 Part (d) 2007

Difference _____

- (d) The diagram is of the human eye.
Name the *part* labelled A.

A _____

What *function* has the ciliary muscle?

Function _____

