



**Science Revised Syllabus  
Junior Certificate  
Higher Level**

**Past Exam Questions on  
B Skeletal System**

**Q1 Part (b) 2013**

(b) Muscles can only cause movement by getting shorter (contracting).

(i) How many muscles are needed to move a bone forward and back in a joint?

How many? \_\_\_\_\_

(ii) Give an example.

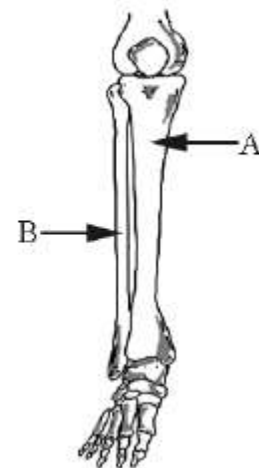
Example \_\_\_\_\_

**Q1 Part (e) and (f) 2013**

(e) Name bone A and bone B of the lower leg.

Bone A \_\_\_\_\_

Bone B \_\_\_\_\_



(f) An ecosystem will have **producers, consumers and decomposers** present. Pick any two groups from the list and explain their role in the ecosystem.

Name of first group \_\_\_\_\_

**Q1 Part (h) 2012**

(h) Name the type of joint shown in the diagram.

Name \_\_\_\_\_

Describe the movements that this type of joint can make.

Describe \_\_\_\_\_

\_\_\_\_\_

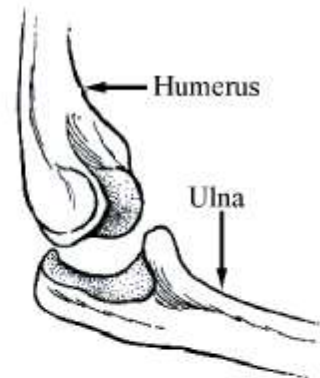
\_\_\_\_\_

Explain how muscles cause the movements of this joint.

Explain \_\_\_\_\_

\_\_\_\_\_

\_\_\_\_\_



**Q1 Part (c) 2010**

(c) Name two *organs* that the human skull protects.

One \_\_\_\_\_

Two \_\_\_\_\_



**Q2 Part (a) 2009**

(a) The diagram shows a human skeleton with a detailed drawing of the structure of the knee joint. The kneecap is not shown.

(i) Name the *bones* labelled A and B. (6)

Bone A \_\_\_\_\_

Bone B \_\_\_\_\_

(ii) What *type of joint* is the knee? (3)

Type \_\_\_\_\_

C is synovial fluid. D is a ligament.

(iii) Give the *functions* of the parts labelled C and D in the knee. (6)

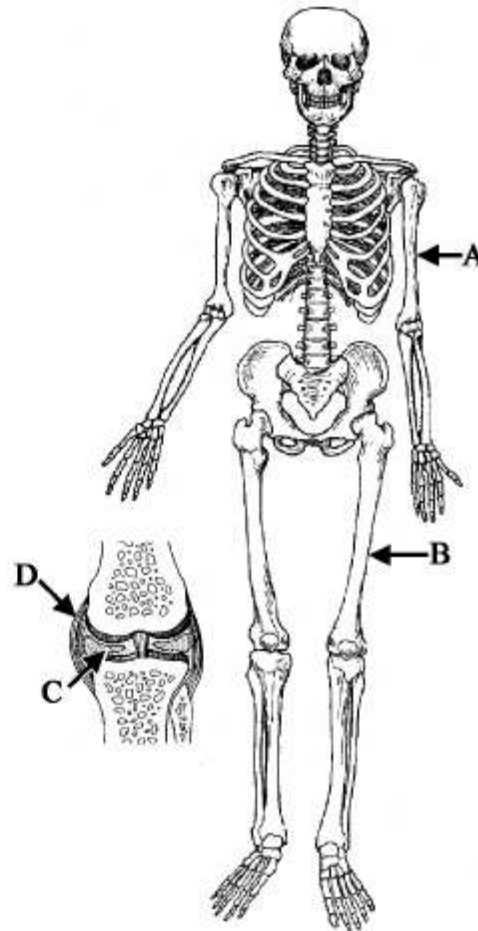
C \_\_\_\_\_

\_\_\_\_\_

D \_\_\_\_\_

(iv) Explain the *action of antagonistic pairs of muscles* in causing the *movement* of limbs. You may use a labelled diagram in your answer if you wish. (6)

\_\_\_\_\_  
\_\_\_\_\_  
\_\_\_\_\_  
\_\_\_\_\_  
\_\_\_\_\_



**Q1 Part (c) 2007**

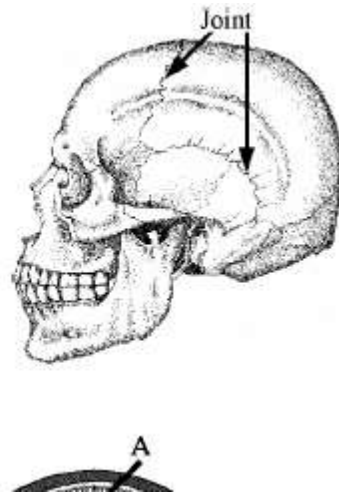
\_\_\_\_\_

- (c) Different types of joints hold together the bones of our skeleton. Name the *type of joint* labelled in the diagram of the human skull.

Name \_\_\_\_\_

How does this type of joint *differ* from other types of joints found in our bodies?

Difference \_\_\_\_\_



**Q1 part (a) 2006**

**Question 1**

- (a) The diagram shows the structure of an elbow.

Name *bone A* and identify the *type of moveable joint B*.

Name of bone A \_\_\_\_\_

Type of joint B \_\_\_\_\_

