



**Science Revised Syllabus  
Junior Certificate  
Higher Level**

**Past Exam Questions on  
B The Cell**

**Q3 Part (b) 2013**

(b) Humans are composed of cells, tissues, organs and systems.

What is meant by each of these terms?

(12)

Cell \_\_\_\_\_

\_\_\_\_\_

Tissue \_\_\_\_\_

\_\_\_\_\_

Organ \_\_\_\_\_

\_\_\_\_\_

System \_\_\_\_\_

\_\_\_\_\_

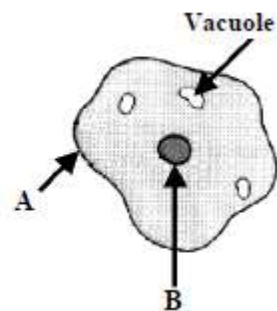
**Q1 Part (e) 2011**

(e) The diagram shows an animal cell. Name part A.

Name of A \_\_\_\_\_

What important structures are located in B?

What? \_\_\_\_\_



**Q3 Part (b) 2006**

(b) The diagram shows a laboratory microscope.

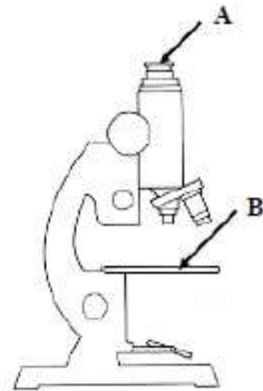
(i) What are the *functions* of parts labelled A and B? (6)

Function of A \_\_\_\_\_

\_\_\_\_\_

Function of B \_\_\_\_\_

\_\_\_\_\_



(ii) Onion epidermis is a tissue only one cell thick.

It is used in school laboratories on microscope slides to investigate plant cell structure using a microscope.

Describe how to *prepare a microscope slide* from a plant tissue. (6)

\_\_\_\_\_

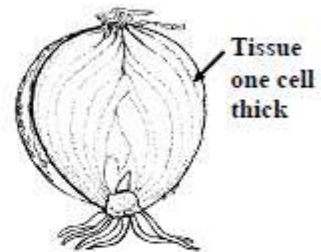
\_\_\_\_\_

\_\_\_\_\_

\_\_\_\_\_

\_\_\_\_\_

\_\_\_\_\_



(iii) Draw a *labelled diagram*, in the box provided, of a *plant cell*. (9)

Labelled diagram