

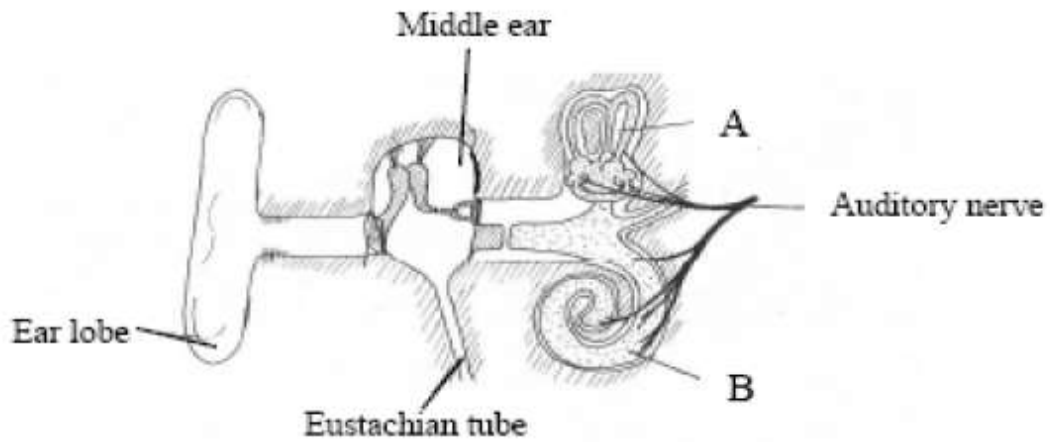


Biology
Leaving Certificate
Ordinary Level

Past Exam Questions on
Eye/Ear and Nervous System

Q14 Part (c) Section C 2013

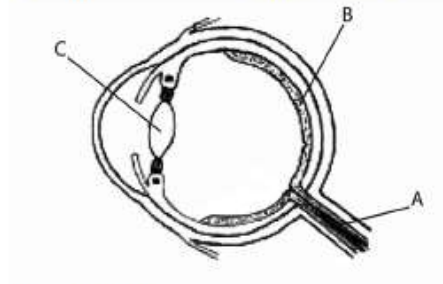
(c) The diagram shows the human ear.



- (i) Name the parts labelled A and B.
- (ii) What is the function of part A?
- (iii) What is the function of part B?
- (iv) What is connected to the middle ear by the Eustachian tube?
- (v) What surrounds the bones in the middle ear?
- (vi) The ear is an example of a sense organ.
Name **two** sense organs, other than the ear and the eye, in the human body.
- (vii) Name **one** disorder of the ear or of the eye and give a corrective measure for the disorder referred to.

Q6 Section A 2011

6. The diagram shows a vertical section through the human eye.



(a) Name the parts labelled A, B, C.

A. _____

B. _____

C. _____

(b) Name the coloured part of the eye.

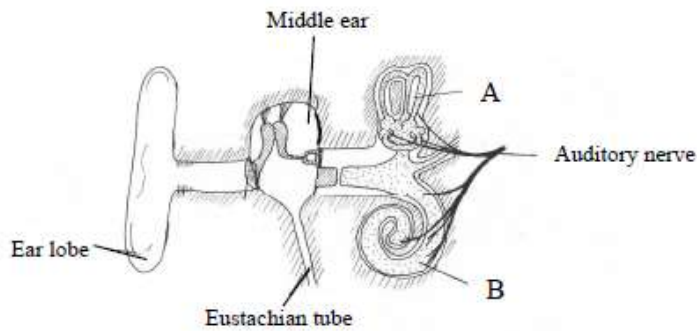
(c) What is the function of the pupil in the eye?

(d) In which labelled part would you find the rods and cones?

(e) What is the function of the cones?

Q5 Section A 2010

5. The diagram shows the external and internal structure of the human ear.



- (i) Name the parts labelled A and B.

A. _____

B. _____

- (ii) What is the function of B? _____

- (iii) What is connected to the middle ear by the Eustachian tube? _____

- (iv) What is the function of the Eustachian tube? _____

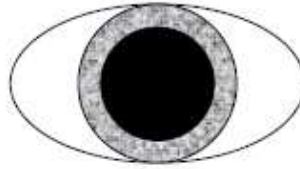
- (v) Name **one** disorder of the ear **or** of the eye and give a corrective measure for the disorder you have named.

Disorder. _____

Corrective measure. _____

Q14 Part (b) Section C 2008

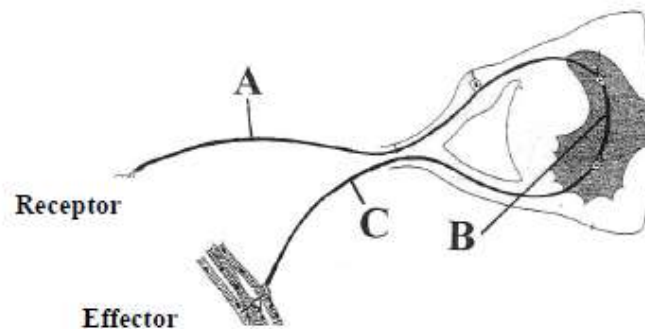
- (b) (i) Copy the diagram of the front of the eye into your answer book and label the iris and the pupil.



- (ii) Is the eye shown in the diagram above adapted for dim light or bright light? Explain your answer.
- (iii) Where in the eye is the retina located?
- (iv) Two types of cells that receive light are found in the retina. Name each of these.
- (v) Give one difference between the two types of cell that receive light.
- (vi) The optic nerve is attached to the eye. What is the function of the optic nerve?

Q15 Part (a) Section C

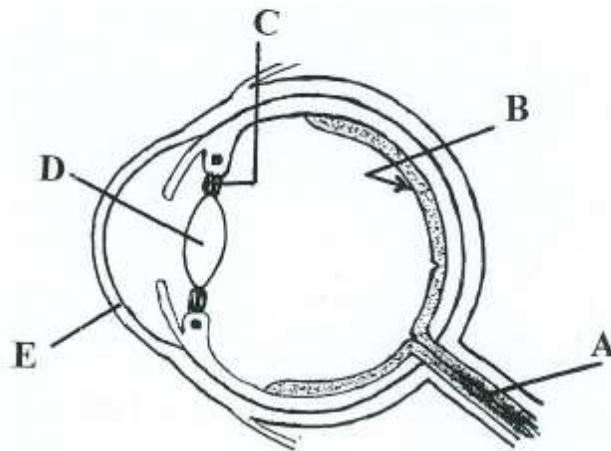
- (a) The diagram shows part of a reflex arc.



- (i) Name neurons A, B and C.
- (ii) In which direction is the impulse transmitted $A \rightarrow B \rightarrow C$ or $C \rightarrow B \rightarrow A$?
- (iii) Name the small gaps between neurons.
- (iv) Neurons produce neurotransmitter substances. What is their function?
- (v) Give an example of a reflex action in humans.
- (vi) Why are reflex actions important in humans?

Q15 Part (b) Section C 2006

(b) The diagram shows a vertical section through the human eye.



- (i) Name A, B, C, D and E.
- (ii) In which of these parts would you find rods and cones?
- (iii) Give **one** function of rods and **one** function of cones.
- (iv) What is the function of A?
- (v) What type of lens is used to correct long sight?