



Biology
Leaving Certificate
Ordinary Level

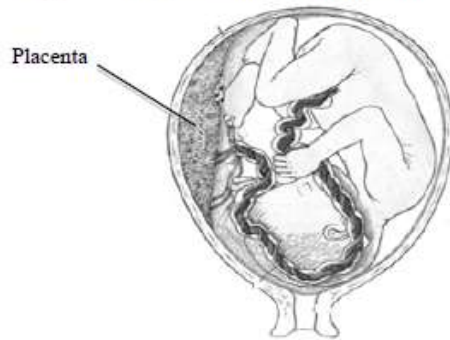
Past Exam Questions on
Human Reproduction

Q12 Section C 2013

12. (a) (i) Explain the term *secondary sexual characteristics*.
 (ii) Give two examples of secondary sexual characteristics in males.

(9)

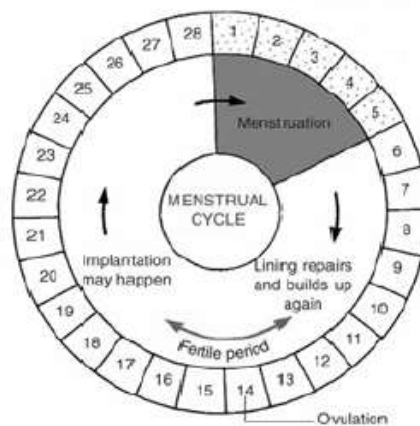
- (b) The diagram shows the foetus in the womb.



- (i) Give two functions of the placenta.
 (ii) Give the three stages of childbirth.
 (iii) Many babies are breast fed after birth. Give two biological benefits of breastfeeding.
 (iv) What is meant by the term *infertility*?
 (v) *In vitro* fertilisation is a method used to treat infertility.
 What is meant by *in vitro* fertilisation?

(27)

- (c) The diagram shows a regular female menstrual cycle.



- (i) What happens in the womb during menstruation (days 1 – 5)?
 (ii) Explain the term *ovulation*.
 (iii) What is meant by the *fertile period*?
 (iv) Where does fertilisation occur in the female body?
 (v) Explain the term *implantation*.
 (vi) Name two female hormones that have a role in the menstrual cycle.
 (vii) What happens to the menstrual cycle when a woman reaches the menopause?

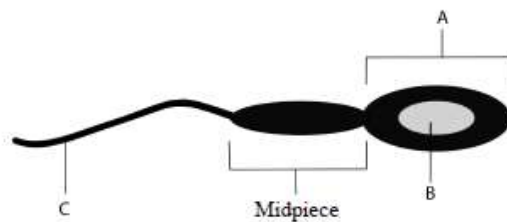
(24)

Q12 Section C 2012

12. (a) (i) Name the two main types of reproduction.
(ii) Explain the term *fertilisation*. (9)

- (b) The flower is the organ of reproduction in many plants.
(i) What part of the flower produces pollen?
(ii) After fertilisation, what part of the flower becomes the fruit?
(iii) Give two methods of seed dispersal in plants.
(iv) Why is it necessary for plants to disperse their seeds?
(v) What is the advantage of dormancy to seeds?
(vi) Give three conditions necessary for seeds to germinate. (27)

- (c) The diagram shows a human sperm cell.



- (i) Name the parts labelled A, B and C.
(ii) What is the function of the midpiece of the sperm?
(iii) Name the hormone responsible for sperm production.
(iv) Give one cause of infertility in men.
(v) Explain the term *contraception*.
(vi) Name two methods of contraception. (24)

Q14 Part (a) Section C 2011

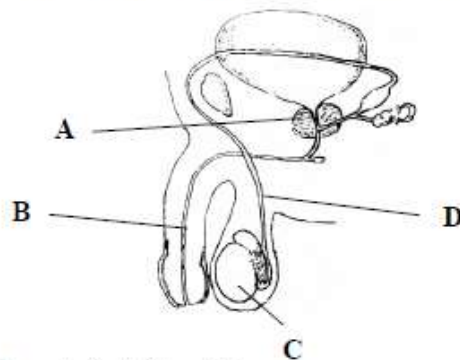
- (a) (i) Draw a large labelled diagram of the human female reproductive system.
(ii) Indicate clearly on your diagram where each of the following events takes place:
1. Ovulation
2. Fertilisation.
(iii) What does the term *infertility* mean?
(iv) *In vitro* fertilisation is a method used to treat infertility.
What is meant by the term *in vitro* in relation to fertilisation?
(v) Give **one** cause of infertility in women.
(vi) As a result of fertility treatment, an embryo develops successfully from an *in vitro* fertilisation. What is the next step for the embryo?

Q14 Part (a) and (b) Section C 2010

14. Answer any **two** of the parts (a), (b), (c).

(30, 30)

- (a) The diagram shows the human male reproductive system.



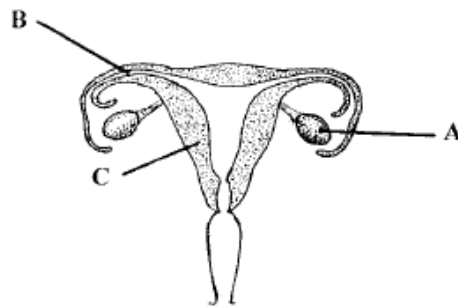
- (i) Name the parts A, B, C and D.
(ii) What is the function of part D?
(iii) Name the principal male sex hormone.
(iv) Name **two** male secondary sexual characteristics.
(v) Draw a labelled diagram of a human sperm cell.
- (b) The diagram shows a foetus in the uterus.

- (i) From what tissues is the placenta formed?
(ii) Give **two** functions of the placenta.
(iii) Describe the process of birth.
(iv) Give any **one** biological benefit of breastfeeding.
(v) List **two** methods of contraception.



Q5 Section A 2006

5. The diagram shows the reproductive system of a human female.



- (a) Name A
 B
 C
- (b) In which of the parts A, B or C is the ovum (egg) formed?
- (c) What is meant by fertilization?
.....
- (d) In which of the parts A, B or C does fertilization occur?
- (e) Give one cause of female infertility.
.....

Q14 Part (b) Section C 2005

- (b) (i) Draw a large labelled diagram of the reproductive system of the human female.
(ii) Indicate on your diagram where each of the following events takes place; fertilisation, implantation.
(iii) What is the menstrual cycle? Outline the main events of the menstrual cycle.