



Biology
Leaving Certificate
Ordinary Level

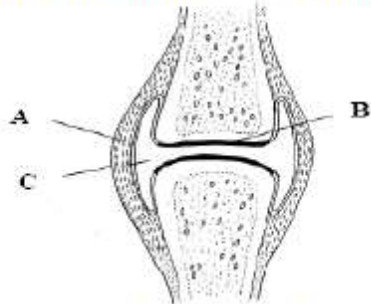
Past Exam Questions on
Musculoskeletal System

Q14 Part (a) Section C 2013

14. Answer any two of (a), (b), (c).

(30, 30)

(a) The diagram shows a synovial joint.

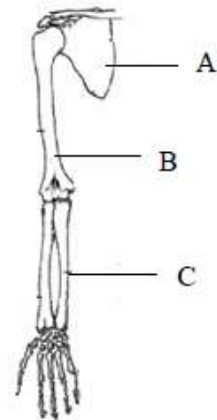


- (i) Name the parts labelled A, B and C.
- (ii) Give two functions of the human skeleton.
- (iii) Vertebrae in the neck are called the cervical vertebrae.
Name and give the exact location of two other types of vertebrae.
- (iv) Name one disorder of the musculoskeletal system.

Q15 Part (b) Section C 2010

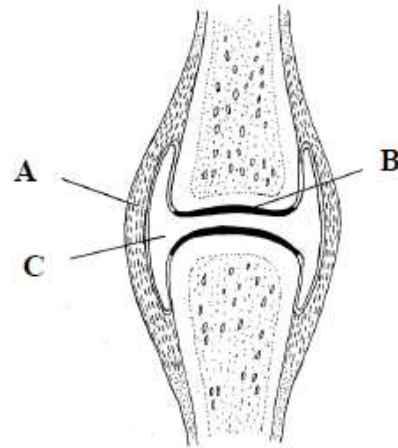
(b) The diagram shows the bones of the human arm.

- (i) Name the parts labelled A, B and C.
- (ii) What structures attach a muscle to a bone?
- (iii) Which upper arm muscle contracts to raise the lower arm?
- (iv) What is meant by the term *antagonistic pair* in reference to muscles?
- (v) Name the type of joint at the elbow.
- (vi) Apart from movement, give one other function of the skeleton.
- (vii) Suggest one reason why the bones of birds are almost hollow.



Q6 Section A 2007

6. Study the diagram of a synovial joint and then answer the following questions.



- (a) Name tissue A
(b) Give a function of A
(c) Name tissue B
(d) Name the fluid in C
(e) Give a function of the fluid in C

Q15 Part (c) 2006

- (c) (i) State two functions of the human skeleton.
(ii) The vertebrae form part of the axial skeleton. Name the vertebrae found in:
1. The neck,
2. The small of the back.
(iii) Name the part of the central nervous system that runs through the vertebrae.
(iv) Name the three bones that form the human arm.
(v) Write a short note (about five lines) on one of the following:
arthritis or osteoporosis.