

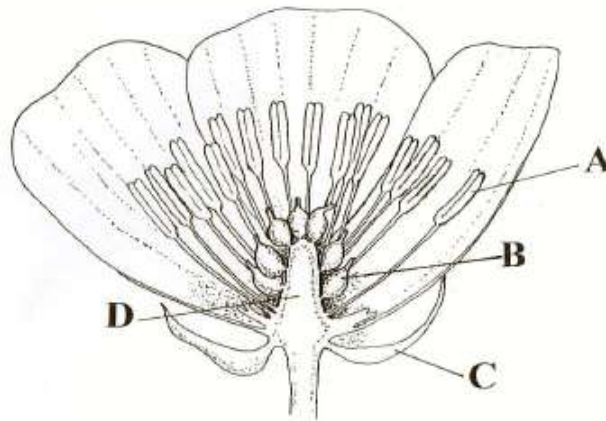


Biology
Leaving Certificate
Ordinary Level

Past Exam Questions on
Plant Responses

Q14 Part (a) Section C 2008

(a) The diagram shows the structure of a flower.



- (i) Name the parts labelled A, B, C, D.
- (ii) In which labelled part is pollen produced?
- (iii) What is meant by pollination?
- (iv) From the list below, choose **three** characteristics in each case of,
 - 1. an insect-pollinated flower,
 - 2. a wind-pollinated flower.brightly coloured petals, feathery stigmas, anthers within petals, anthers outside petals, nectaries, petals reduced or absent.
- (v) What process follows pollination in the life cycle of a flowering plant?